

APP CRS	Rwy Idg	5802
076°	TDZE	727
	Apt Elev	778

RNAV (RNP) Z RWY 8

BURBANK/BOB HOPE (BUR)

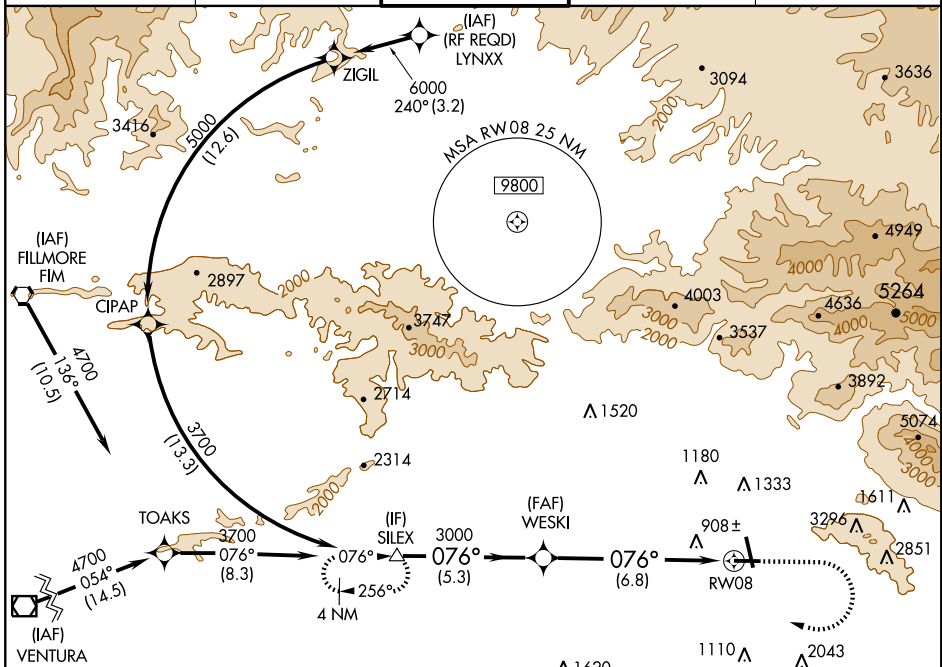
▼ GPS required. For uncompensated Baro-VNAV systems, procedure NA below 1°C (33°F) or above 47°C (117°F). Visibility reduction by helicopters NA. For inoperative MALSR, increase RNP 0.30 all Cats visibility to 1¼ mile. *Missed approach requires minimum climb of 391 feet per NM to 2700 if unable see RNAV (GPS) Y Rwy 8.

MALSR



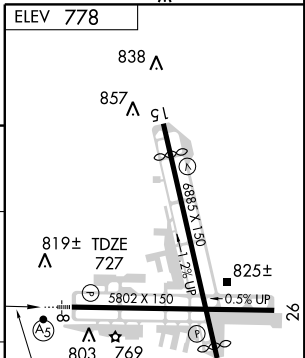
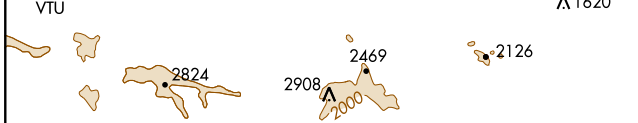
MISSED APPROACH: Climb to 1700 then climbing right turn to 4000 direct SILEX and hold.

ATIS 134.5	SOCAL APP CON 134.2 338.2	BURBANK TOWER 118.7 254.3	GND CON 123.9 348.6	CLNC DEL 118.0 348.6
----------------------	-------------------------------------	-------------------------------------	-------------------------------	--------------------------------



SW-3, 22 OCT 2009 to 19 NOV 2009

SW-3, 22 OCT 2009 to 19 NOV 2009



SILEX	VGSIs and RNAV glidepath not coincident.		1700	4000	SILEX
Procedure Turn NA			↑	↷	△
GP 3.00°					
TCH 60					
CATEGORY	A	B	C	D	
RNP 0.30 DA*	1260/60		533 (500-1¼)		

SPECIAL AIRCRAFT & AIRCREW AUTHORIZATION REQUIRED

MIRL Rwy 15-33
HIRL Rwy 8-26
REIL Rwy 15, 26 and 33